



# M12 X-Code

## Connector Introduction



Copyright © 2020 Neltron Industrial Co., Ltd. All rights reserved.  
PLEASE CONSULT US FOR ANY DETAIL DRAWING AND SPECIFICATION

## M12 X-Code Connector Introduction

The M12 X-Code connector achieves excellent signal transmission by using a cross-shaped shield (X-Code) to isolate four signals. With its complete 360 ° shielding, it can achieve the best signal performance and meet CAT6A and CAT7 requirements. The M12 X-Code connector is ideal for 1GB to 10GB Ethernet applications. The M12 X-Code series complies with the IEC 61076-2-109 standard. The connector is vibration-proof and corrosion-resistant, and has an IP67 waterproof rating. These durable features make this series ideal for use in damp and harsh environments.



# M12 X Code Application Examples



**Neltron Industrial Co., Ltd.**

M12 X-Code Connector Introduction

# M12 X Code Application Examples





# M12 X Code Application Examples



Construction Machinery



Marine



Testing Equipment



UV Light  
Water Filter System

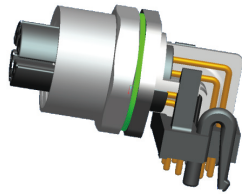


**Neltron Industrial Co., Ltd.**

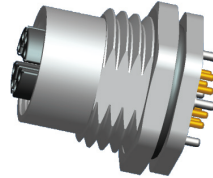
M12 X-Code Connector Introduction

# M12 8P X-Code Specifications

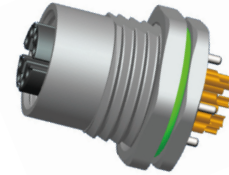
## Panel Mount (Socket)



R/A Panel Mount Front  
Fastened PCB Dip  
120512R-08S-FX-PBS

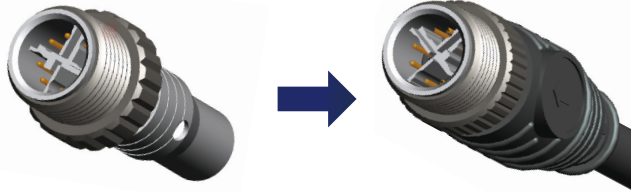


Straight Panel Mount  
Front Fastened PCB Dip  
120512-08S-FX-PBSX



Straight Panel Mount  
Front Fastened Solder  
120512-08S-FX-PMSXXX

## Solder (Plug)



Wire Soldering  
120512-08P-X-MMS

### Technical Data

Operation Standard	IEC 61076-2-109
Temperature	-25°C ~ 90°C
Range	IP67 (Under tight lock condition)
Insulator	PA66 Black
Terminal	Brass/Gold Plated
Screw/ Screw Nut	Zinc Alloy/ Brass Nickel Plated
Seal	Silicon



**Neltron Industrial Co., Ltd.**

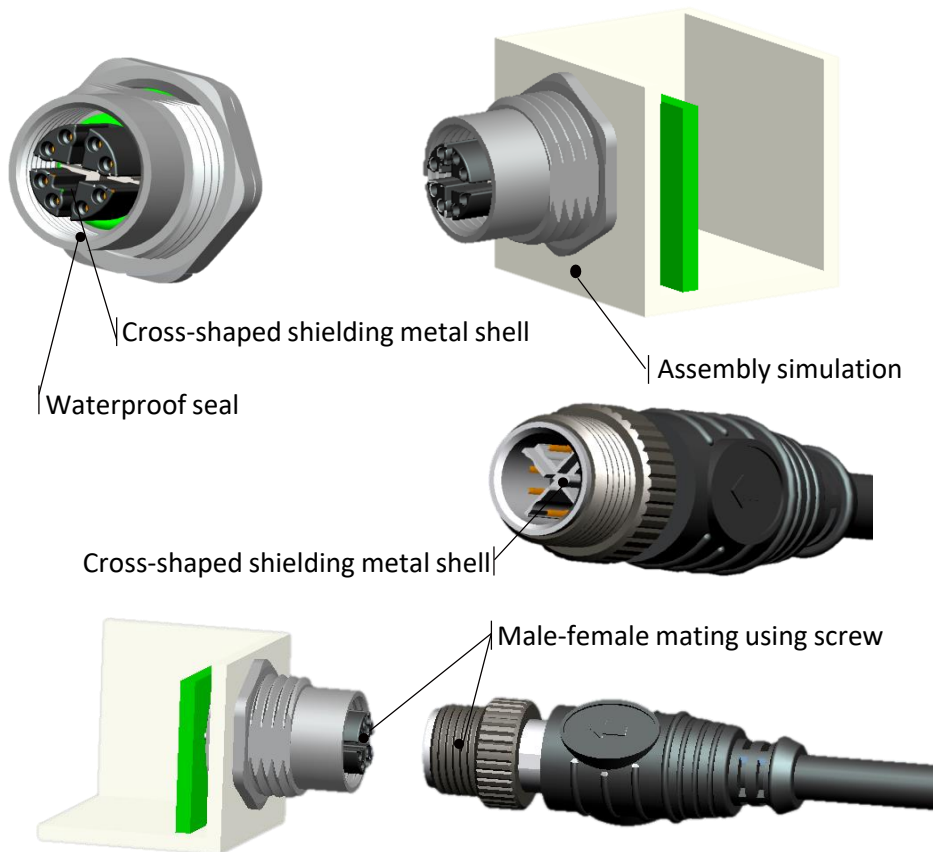
M12 X-Code Connector Introduction

# M12 Code Introduction

M12 X code 8pin connectors / cables are recommended for various complex fieldbus specifications, and according to the IEC 67610-2-109 standard IP67 protection level, it was initially used as a sensor and encoder in the connection automation technology. A-code is the most commonly used interface. Because industrial Ethernet integrates multiple types of sensors in the field, in order to prevent incorrect insertion and inconvenience of installation, inefficiency and damage to unnecessary components, B-code is one of the interfaces to distinguish; D-code connector can not only be used as an error-proof mating, but also has a high transmission speed and a protection level higher than RJ45. It has a unique advantage in the field of communication; the emergence of X coding has made a big leap in data transmission. 4 pairs of data transmission can reach 10Gbit / s under the plug-in state and also applies to IP67 protection. Excellent 360 ° shielding ensures efficient electromagnetic compatibility interference and safe and reliable connection for trouble-free data transmission. The PNO user organization has formally incorporated the X-coded M12 plug connector into its wiring manual.

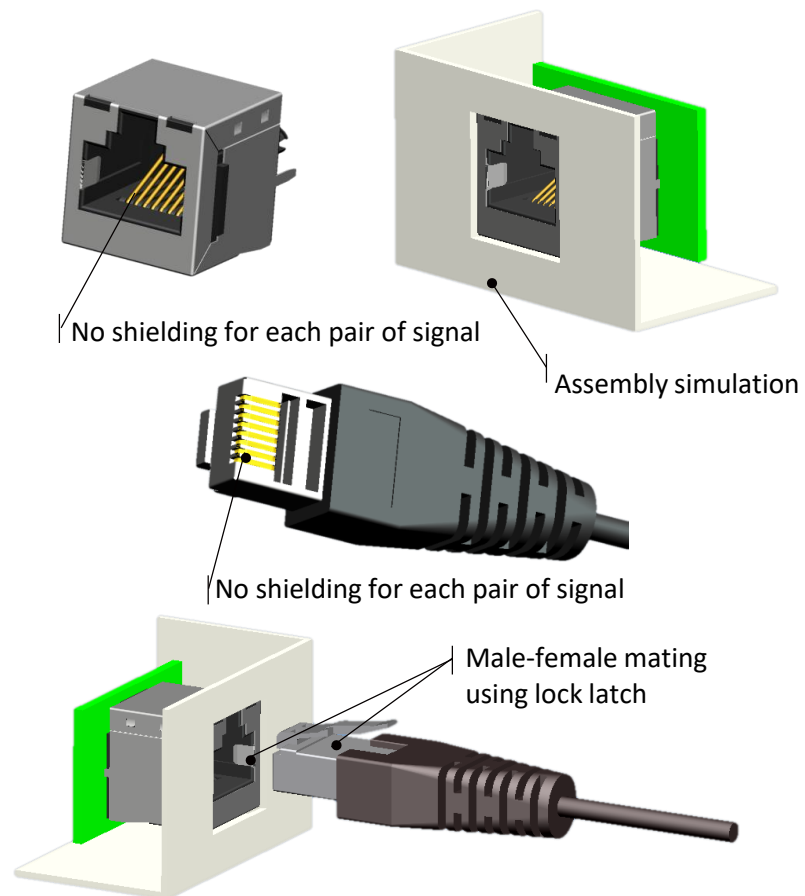
X Code		Plug			Socket		
Plug	Socket	A Code	B Code	D Code	A Code	B Code	D Code

## M12 8P X-Code



1. Waterproof level – IP67
2. Screw type locking – more firm, tight, stable and anti-vibration
3. Cross-shaped shielding metal shell decreases signal loss during transmission

## RJ45 8P8C



1. No waterproof function
2. Latch type locking – risk of unstable contact during vibration
3. No shielding for each pair of signal



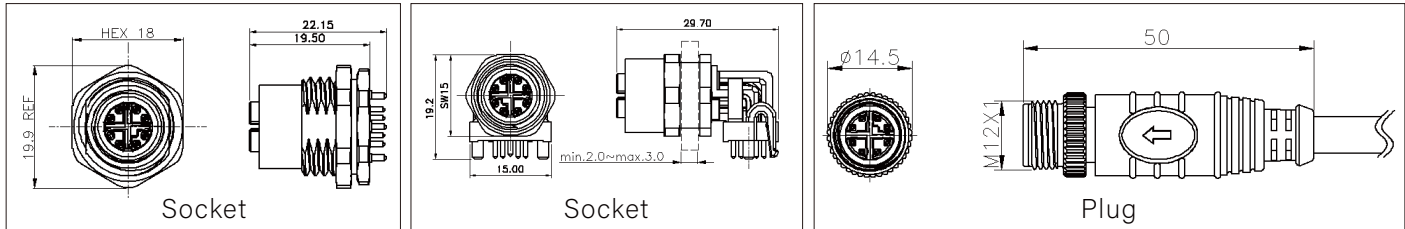
**Neltron Industrial Co., Ltd.**

M12 X-Code Connector Introduction



# M12 8P X-Code Advantages

1.Smaller, M12 08P X-Code connector dimension:



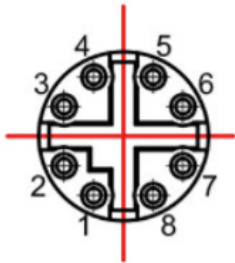
2.Tight locking mechanism through screw design, interlocking screw nut and body

3.Faster transmission speed

M12 D-Code transmission speed = 100Mbps

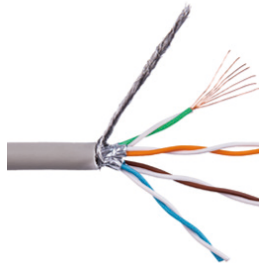
HM12 08 X-Code transmission speed = 1Gbps-10Gbps

## M12 X-Code 8P Pin Alignment



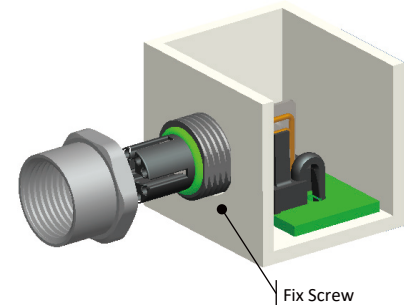
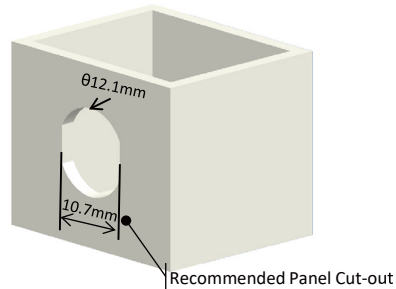
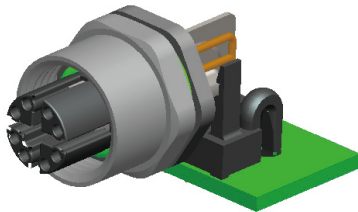
- 1.White orange
- 2.Orange
- 3.White green
- 4.Green
- 5.White brown
- 6.Brown
- 7.White blue
- 8.Blue

Four pairs of twisted wires reduce interference and return loss.  
Transmission speed up to 10Gbps.



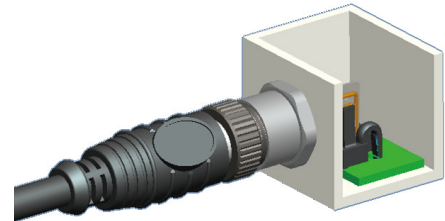
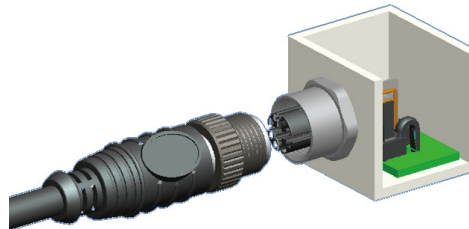
# R/A Panel Mount Front Fastened PCB socket & Straight Molding plug cable application simulation

M12 R/X Socket PCB Type  
120512R-08S-FX-PBS



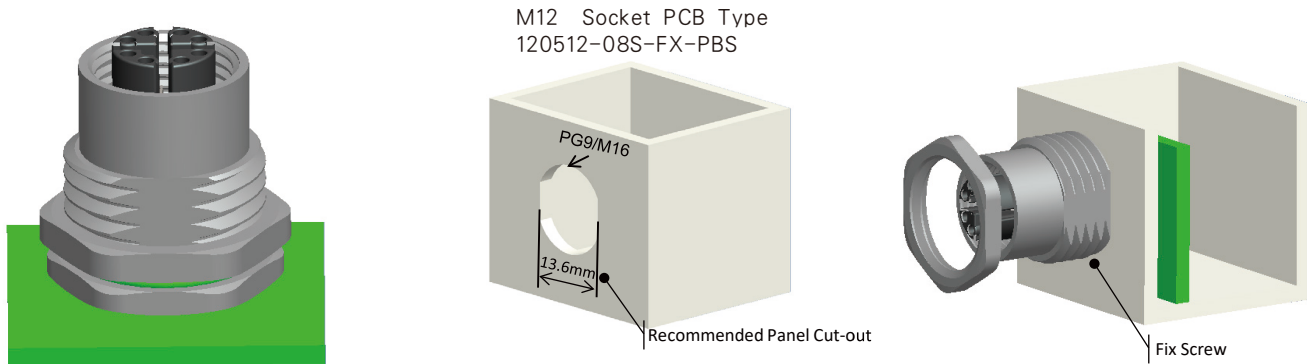
## M12 Socket Front Fastended

M12 Plug Solder Type  
120512-08P-X-MMS



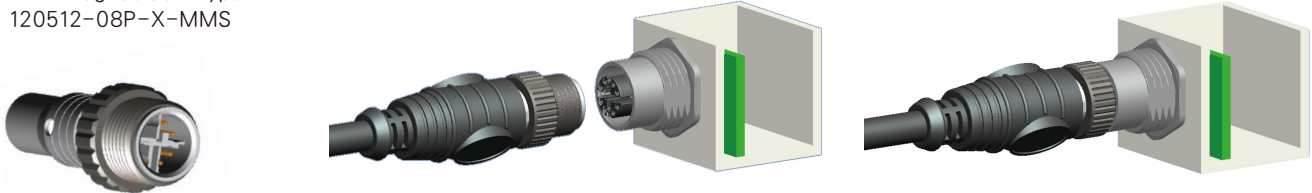
## Mating View

# Straight Panel Mount Front Fastened PCB socket & Straight Molding plug cable application simulation



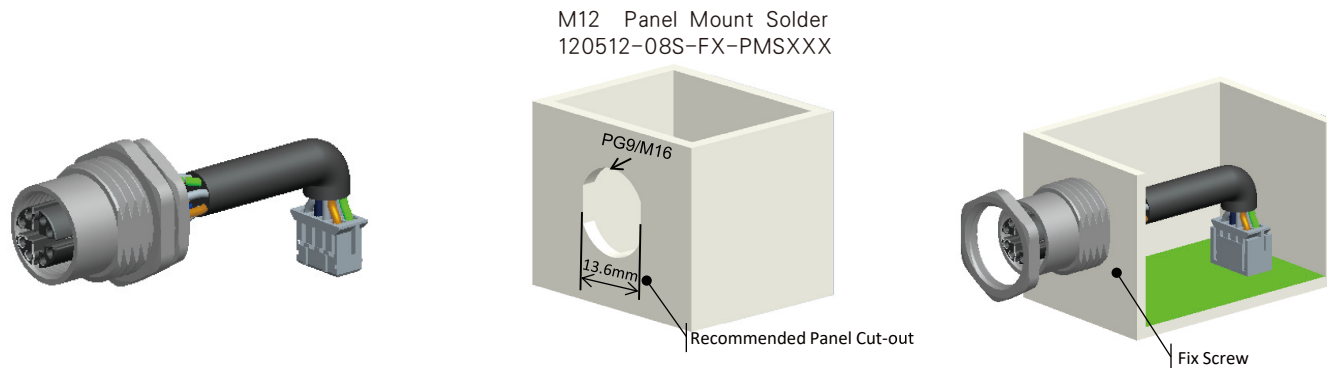
M12 Socket Front Fastended

M12 Plug Solder Type  
120512-08P-X-MMS



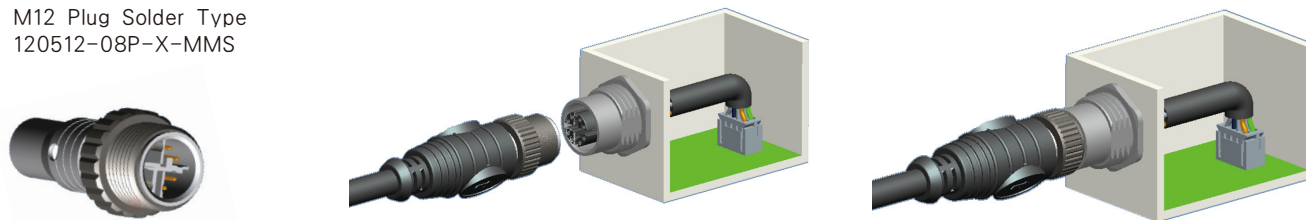
Mating View

# Straight Panel Mount Front Fastened Soldering & Straight Molding plug cable application simulation



## M12 Socket Front Fastended

M12 Plug Solder Type  
120512-08P-X-MMS



## Mating View